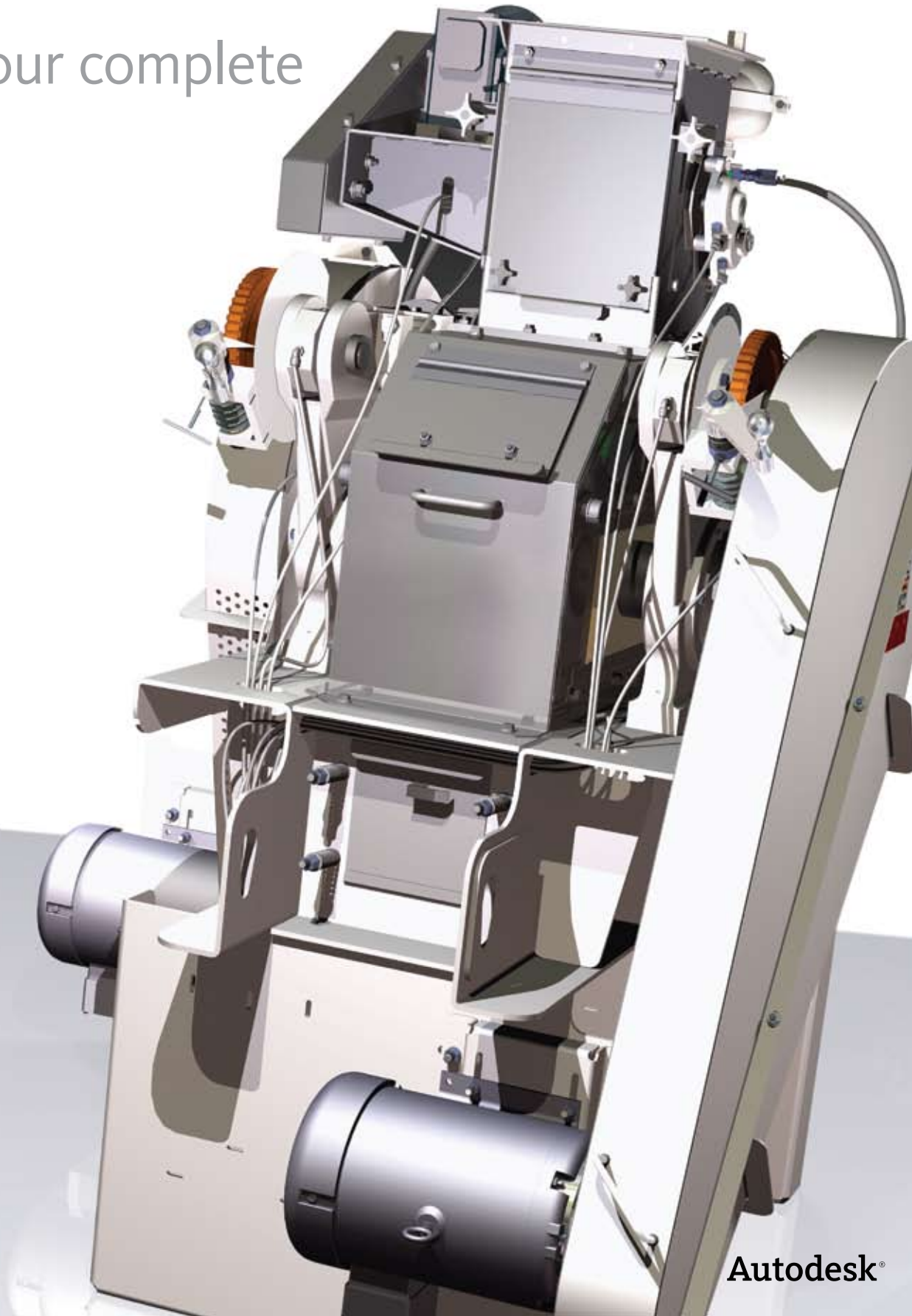


Autodesk®

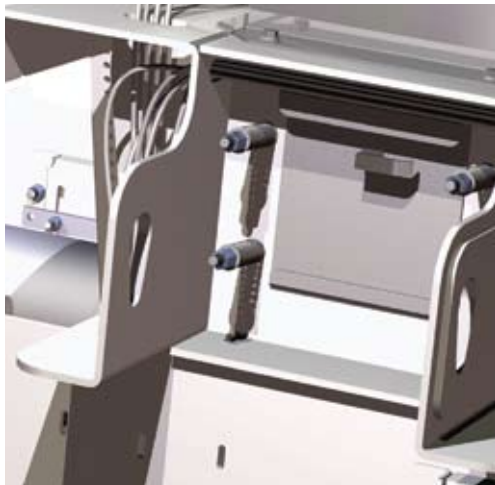
Productstream®
Professional 2010

Manage your complete
design.



Autodesk®

Manage Your Complete Design



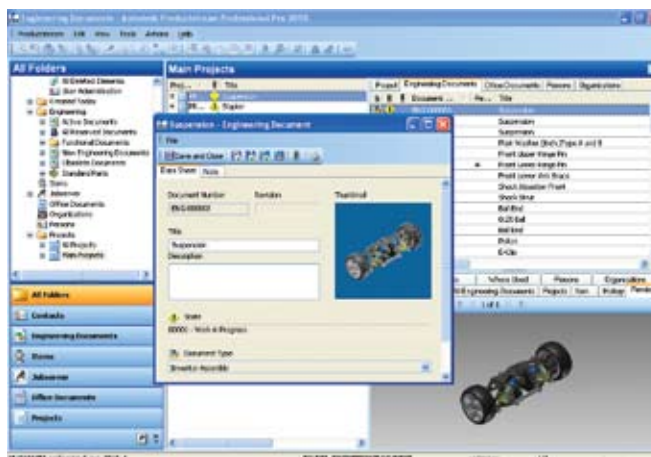
Securely capture and manage your teams design data and effectively promote knowledge sharing with other department across the company.

Contents

Manage Your Complete Design.....	1
Manage The Digital Prototype More Efficiently	2
Make Collaborative Design Easy.....	4
Capture And Share Knowledge And Expertise Across The Company.....	5
Quickly Adapt To Growing Business Needs	6

Autodesk® Productstream® Professional software helps you manage and track design data throughout the digital prototyping process. It securely captures, manages and organizes your data in a central location, provides efficiency during design revision and release, facilitates design re-use, as well as significantly reduces time spent searching for information. Enable extended teams around the world to work concurrently on mutual projects with

collaborative engineering capabilities. Additionally, Productstream Professional extends the value of the digital prototype with other departments across the company and therefore builds the foundation for an engineering knowledge-base. It even provides a high degree of flexibility to automate, streamline and shorten your design processes, and meet the specific needs of your business to accelerate the product development cycle.



Find Design Data Faster

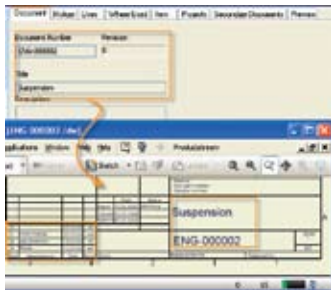
The searching capabilities in Autodesk Productstream Professional help users greatly reduce the time spent searching for design data and other relevant information needed to complete design tasks and meet increasingly tight deadlines. Key searching capabilities include saved searches, favorites, shortcuts and more.

Quick and Easy Viewing with Autodesk Design Review

Productstream Professional automatically publishes design data as DWF™ files, providing quick access even for non-CAD users to view, print and mark up files using Autodesk® Design Review software.

Promote Company Standardization

Productstream Professional software makes it easy to meet company standardization goals with tools such as automatic part numbering, property mapping, and property policies that help reduce the burden on end users. In addition, Productstream Professional facilitates adherence to standards such as ISO 9000 and RoHS.



Fast and Effective Design Reuse

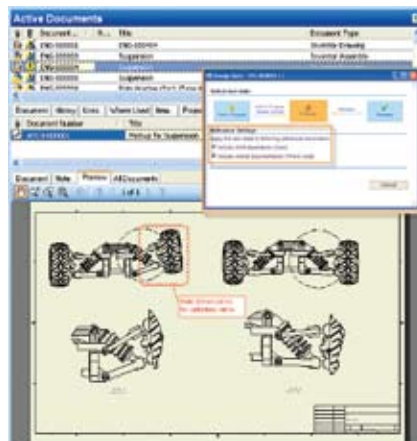
Copy an entire design, including all related files and documentation, for reuse in a new project. The design reuse process saves hours of precious engineering time because users no longer have to manually recreate or duplicate complex, large models and drawing sets.

Classify Items

Classify items using the DIN 4000/4001 policy. Class characteristics extend the item description in unique ways such as length, width, diameter, color and material types. Classifying items helps reduce the time required to find design information and decreases the risk of item duplication.

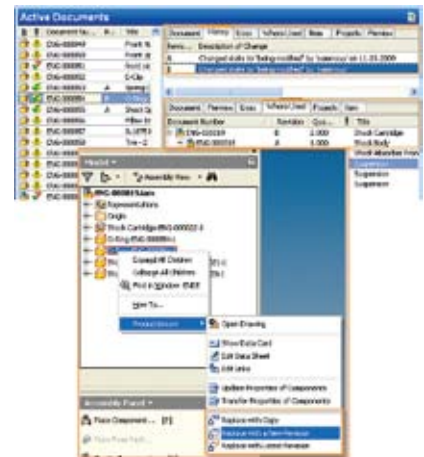
Validate your Design and Track Valuable Feedback

Control the critical aspects of design data as it progresses through its lifecycle. From early concept to retirement, control data security, enforce property standards and allows users get access to the correct information at the right time. Furthermore, tracking and managing valuable feedback using Autodesk Design Review's markup capability during the release process expedites communication and improves documentation of engineering changes.



Easily manage your design changes

Understand the impact of changing a design by accessing Productstream Professional's where used analysis before proceeding. Capture the revision history of your data, making tracking and audit tasks easy as you make continuous improvement to your designs. Help reduce the risk of design and manufacturing errors by applying security to the data revisions and granting access to the 'correct' revision of a design to those users that need access.



Make Collaborative Design Easy

Connect teams across discrete locations while maintaining data integrity and high performance.

Design Around the World More Effectively and Securely

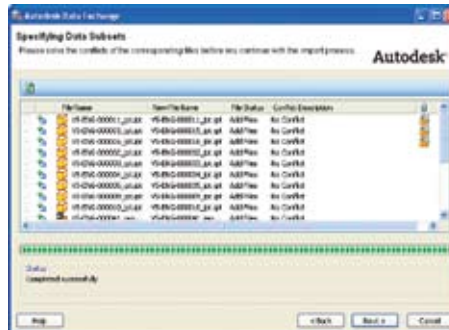
Synchronizing design data across multiple sites gives designers local access to the latest files, as if they were in the same location. This enables extended teams to work on joint projects concurrently and more effectively while maintaining data integrity and high performance.

Location ID	Title	Translator ID
MEX	Autodesk Administration	MEX
FAB	Fab	FAB
ITA	Italy	ITA
USA	United States	USA

Engineering Documents	Class Documents	Secondary Documents
ENRNG-0001	ENRNG-0001	MEX
ENRNG-0002	ENRNG-0002	MEX
ENRNG-0003	ENRNG-0003	MEX
ENRNG-0004	ENRNG-0004	MEX
ENRNG-0005	ENRNG-0005	MEX
ENRNG-0006	ENRNG-0006	MEX
ENRNG-0007	ENRNG-0007	MEX
ENRNG-0008	ENRNG-0008	MEX
ENRNG-0009	ENRNG-0009	MEX
ENRNG-0010	ENRNG-0010	MEX

Exchange Data with Suppliers

Productstream Professional's Data Exchange utility promotes bidirectional exchange of project-based design data/engineering packages in a controlled and accurate way. This feature helps users more efficiently and safely outsource design tasks to external vendors and business partners.



Productstream Professional Clients for Non-Autodesk Design Products

Integrate 3rd party CAD applications such as SolidWorks® and Pro/ENGINEER® with Productstream Professional. All design teams within your company can share their design knowledge and engineering data throughout the products lifecycle.

Capture And Share Knowledge And Expertise Across The Company

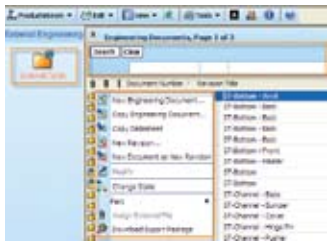
Extend the value of your digital prototype by leveraging capabilities that make it easy to share knowledge with other departments.

Office Client Access for Non-CAD Users

Allow the entire company, from management to office staff, to access relevant design related data in a controlled manner, allowing them at the same time to create and manage their own daily office correspondence, spreadsheets and presentations related to their projects.

Real-time Access to Product Data

Productstream Professional provides controlled web access to users that simply need to consume data, such as production departments or other non-cad users. Access can be filtered to show only relevant project data, allowing users to view and print only. The Web Client can also give remote project teams access to work-in-progress data for viewing and editing. This helps department communication to be as effective and broad reaching as possible



Reporting

Rapidly generate reports to gain visibility into engineering productivity, design progress, and data evolution. Develop standard reporting templates, making it easier for everyone to access and analyze critical data. Analyze data points such as average time to close engineering changes, number of changes requested by department, average cost per revision and so on.

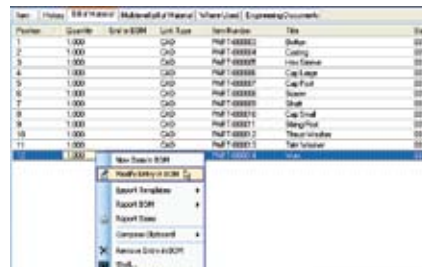
Automate Repetitive Tasks and Processes

Shift repetitive engineering tasks such as printing, automatic mail notification, and silent release, from user workstations to the Productstream Professional Job server. This gives designers the opportunity to spend more time on their design and therefore increases efficiency and productivity.



Bill of Materials Management

Manage bills of materials (BOMs) using a simple interface to control quantities and materials required for the digital prototype. Productstream Professional drives its BOM from design data. It automatically consumes engineering changes reflected in the BOM by maintaining full revision history, enabling complete product definition and BOM accuracy.



Item	Quantity	Unit	Description	Rev	Status
1	1.000	CAD	Part 1-000001	0001	0001
2	1.000	CAD	Part 1-000002	0001	0001
3	1.000	CAD	Part 1-000003	0001	0001
4	1.000	CAD	Part 1-000004	0001	0001
5	1.000	CAD	Part 1-000005	0001	0001
6	1.000	CAD	Part 1-000006	0001	0001
7	1.000	CAD	Part 1-000007	0001	0001
8	1.000	CAD	Part 1-000008	0001	0001
9	1.000	CAD	Part 1-000009	0001	0001
10	1.000	CAD	Part 1-000010	0001	0001
11	1.000	CAD	Part 1-000011	0001	0001
12	1.000	CAD	Part 1-000012	0001	0001

Integrations with Enterprise Business Systems

Eliminate expensive, time-consuming engineering processes, such as manual BOM data entry into business systems like Microsoft™ Dynamics™ NAV, SAP R/3, Infor™, by connecting your company's design data to your enterprise application. This helps to reduce errors and shortens the product development cycle.

Quickly Adapt To Growing Business Needs

Having a high degree of flexibility helps organizations expand application capabilities and streamlines business and design processes to accelerate product development cycles.

Easy and Flexible Administration

Take the complexity out of a client-server application by enabling people of all skill levels to manage the server using standard tools based on common technologies such as Microsoft® SQL Server®, which is supplied and installed with Productstream Professional. In addition, support for Oracle® databases gives flexibility for virtually any IT environment and company policy.

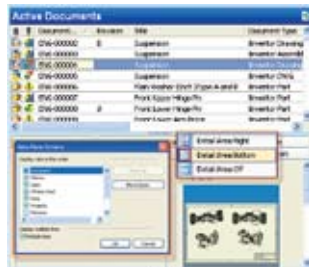
Configurable Security and Access Control

Flexible security allows administrators to control who, where, and when users have access to data such as documents or projects in a certain lifecycle state, ensuring that the right users always get the right data at the right time.



Tailor the User Interface to Match Business Need

Productstream Professional offers a configurable user interface environment, including tab option settings, splitter on and off switches, and customizable datasheets, providing users with the flexibility to configure the UI to include what information is most relevant for them.



Quickly meet Changing Business Needs

Productstream Professional provides a high degree of flexibility, including a peerless open data model and architecture. A rich API enables businesses to easily change, expand, and enhance software behaviors to adapt the way their organization works, helping meet their business demands and optimize their product development.

Build and Manage Custom Workflows

Build and manage enterprise workflow processes using a flexible engine to create new lifecycle definitions, then apply to existing or newly defined objects. This reduces cost and shortens time for approval, submission and production.

Optimize your Investment in Customization

Stay up to date with Productstream Professional. Through a flexible profile mechanism, your customization investments are safe and will be retained during any updates you perform from service packs to product upgrades.

Digital Prototyping for the Manufacturing Market

Autodesk is a world-leading supplier of engineering software, providing companies with tools to experience their ideas before they are real. By putting powerful Digital Prototyping technology within the reach of mainstream manufacturers, Autodesk is changing the way manufacturers think about their design processes and is helping them create more productive workflows. The Autodesk approach to Digital Prototyping is unique in that it is scalable, attainable, and cost-effective, which allows a broader group of manufacturers to realize the benefits with minimal disruption to existing workflows, and provides the most straightforward path to creating and maintaining a single digital model in a multidisciplinary engineering environment.

Learn More or Purchase

Access specialists worldwide who can provide product expertise, a deep understanding of your industry, and value that extends beyond your software purchase. To purchase Autodesk Productstream Professional, contact an Autodesk Premier Solutions Provider or Autodesk Authorized Reseller. To locate the reseller nearest you, visit www.autodesk.com/reseller.

Stay ahead of the competition with Autodesk's practical approach to data management. For more information, visit www.autodesk.com/learning

Autodesk Services and Support

Accelerate return on investment and optimize productivity with innovative purchase methods, companion products, consulting services, support, and training from Autodesk and Autodesk authorized partners. Designed to get you up to speed and keep you ahead of the competition, these tools help you make the most of your software purchase—no matter what industry you are in. To learn more, visit www.autodesk.com/servicesandsupport.

Autodesk Subscription

Get the benefits of increased productivity, predictable budgeting, and simplified license management with Autodesk® Subscription. You get any new upgrades of your Autodesk software and any incremental product enhancements, if these are released during your subscription term, and you get exclusive license terms available only to subscription members. A range of community resources, including web support direct from Autodesk technical experts, self-paced training, and e-Learning, help extend your skills and make Autodesk Subscription the best way to optimize your investment. To learn more, visit www.autodesk.com/subscription.