

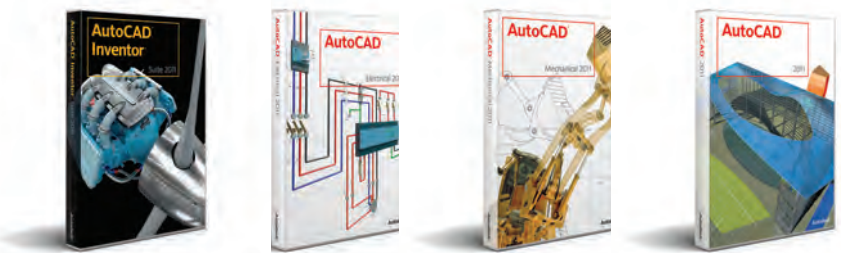
# Top 10 Reasons to Add Autodesk Data Management to Your Design Process

## A Practical Approach to Data Management

Help maximize return on your company's investment in design data by driving design re-use with the Autodesk® Vault family of products, part of the Autodesk solution for Digital Prototyping. The product line — Autodesk® Vault, Autodesk® Vault Workgroup, Autodesk® Vault Collaboration and Autodesk® Vault Professional — helps design, engineering, and manufacturing workgroups manage the digital prototyping process. By centralizing the storage of all engineering data and related documents, you can reduce time organizing files, avoid costly mistakes, and more efficiently release and revise designs. As product designs evolve and become more complicated, the Autodesk® Vault family of products protects designers and engineers from unintentional overwriting of good designs. In addition, the data management software's revision process can be quickly deployed or tailored to unique requirements.

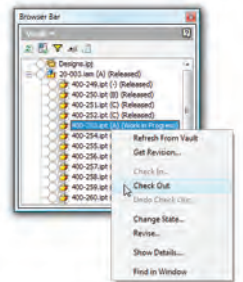
### 1 Best-in-Class Autodesk CAD integration

Autodesk Data Management software – Autodesk Vault Workgroup, Autodesk Vault Collaboration and Autodesk Vault Professional – is tightly integrated with Autodesk design applications such as Autodesk® Inventor®, AutoCAD® Electrical, AutoCAD® Mechanical, and AutoCAD® software. Deep integration makes it easy to manage data associated with your digital prototype from engineering through manufacturing—saving time and ensuring data accuracy.



### 2 Teamwork and Collaborative Design

Team members can work on a digital prototype without overwriting each other's data thanks to multiuser functionality. Team members check out a design before making modifications, then check it back in when they're done. With everyone working together, you can better balance resources, speed projects to completion, and meet tight deadlines.



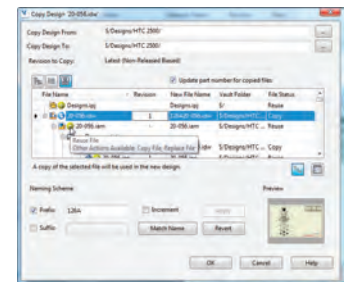
### 3 Find Data Quickly

Use a range of methods, such as saved searches and shortcuts, to find and organize data. Using Autodesk data management software vastly reduces the time it takes to find information, so you can spend more time designing and less time searching for data.



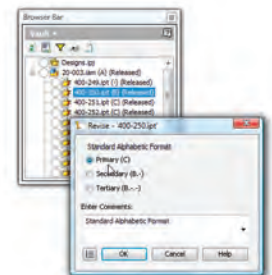
### 4 Rapidly Copy and Reuse Data

Save hours of design time—stop manually recreating or duplicating complex models and drawing sets. Using Autodesk data management software, you can copy a digital prototype—including all related files and documentation—for use in a new design. It's easy to configure the files you want to replace, reuse, or copy.



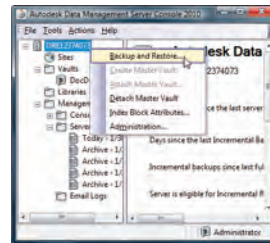
### 5 Control Design Data Access with Revision Management

Audit and track the revision history of your data files from a single location. Reduce the chance of design and manufacturing errors by securely releasing and tracking files throughout the design cycle, helping make sure that team members access only the correct revision of data.



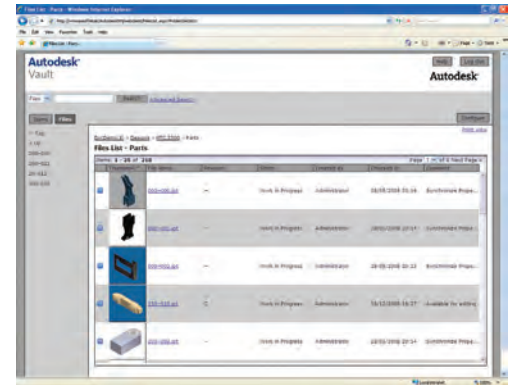
## 6 Simple Administration and Configuration

The Autodesk Vault family of products provide tools to manage your Vault server, so you experience maximum uptime. Intuitive administrative tools make server management easy for even those with minimal IT knowledge.



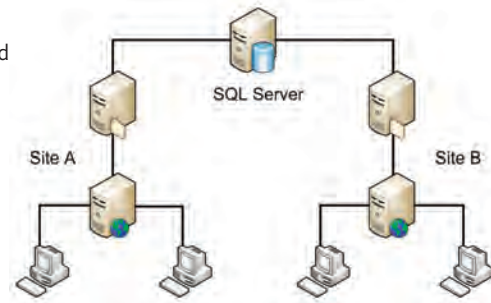
## 7 Share Data Outside of the Design Group

With Autodesk Vault Collaboration and Vault Professional software, you can share engineering design data with the shop floor with the included web client and expose design related information to the extended enterprise by publishing to Microsoft® SharePoint®.



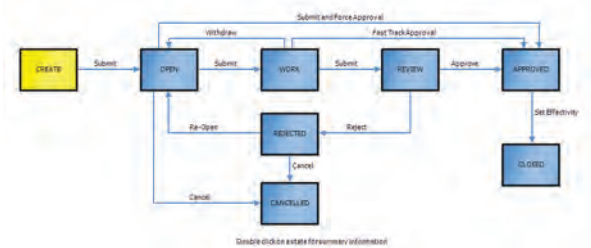
## 8 Scalability for Multiple Sites and Large Workgroups

Multi-site functionality, available with Autodesk Vault Collaboration and Vault Professional software, enables companies to synchronize design data among distributed workgroups, extending the reach of the digital prototype to the entire organization.



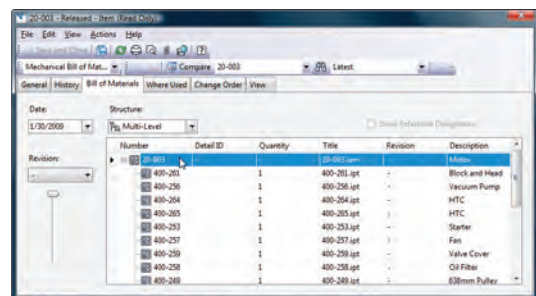
## 9 Automated Release and Change Processes

Manual processes for release and change can lead to design project delays and shop-floor errors. Autodesk Vault Professional software gives design teams the choice of standard or configurable processes for release and engineering change order management, helping them avoid costly mistakes and remove process bottlenecks.



## 10 Coexist and Exchange Data with Enterprise Business Systems

Take full advantage of the advanced functionality in Autodesk Vault Professional software with powerful tools to manage Bills of Materials (BOMs) and promote earlier collaboration by exchanging data with manufacturing business systems.



### Now is the Time

If you want to shorten product development cycles and produce higher-quality manufactured goods while avoiding the complications and expense traditionally associated with data management systems, then now is the time to take a look at the Autodesk Vault family of products.

For more information on the Autodesk Vault family of data management products, please visit [www.autodesk.com/vault-family](http://www.autodesk.com/vault-family). To locate the reseller nearest you, visit [www.autodesk.com/reseller](http://www.autodesk.com/reseller).